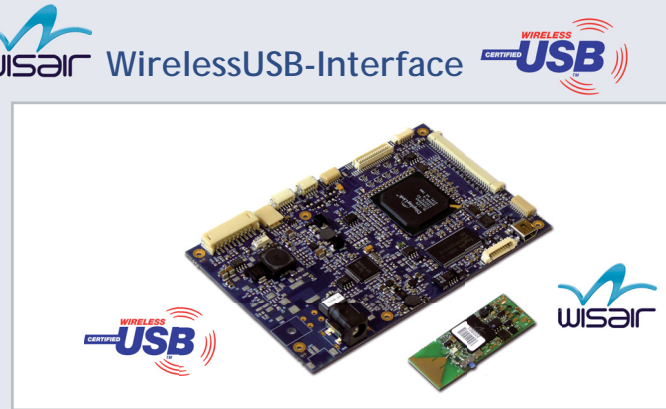


USB Controller Board

LCD TFT USB Controller Board with optional **WISAIR** WirelessUSB-Interface

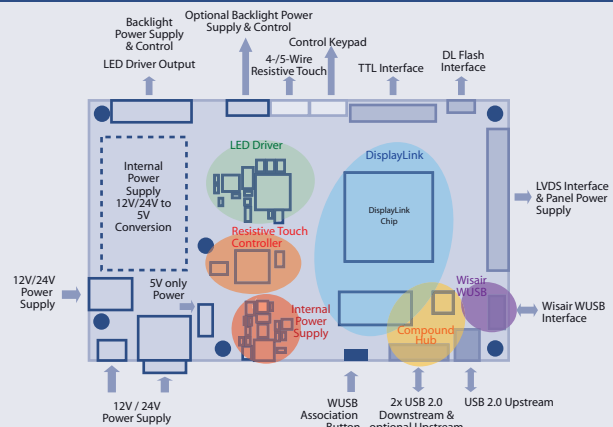
d.screen USB is an innovative controller board solution for high performance USB 2.0 connected displays. It is designed to act as a direct interface between USB 2.0 and almost any LCD TFT display from VGA up to UXGA/WSXGA+. A highly efficient power-management and the supported WUSB technology from Wisair makes d.screen USB the perfect solution for portable multifunctional monitors.

d.screen USB is a member of the **device** family. As any member of this family which is developed by Display Solution AG this board was designed to meet the extended requirements of embedded applications.



Features

- USB-Interface only
 - DisplayLink UGA Technology - DL120/160
 - WUSB-Interface for Wisair's WUSB technology
 - USB-Hub (2 USB 2.0 Ports for additional USB-devices)
 - Display brightness control
 - Display on/off via push-button
 - Picture rotation support via external sensor (optional)
 - USB Touch-Controller 4-/ and 5-wire support
 - LED-Driver for up to 4/8 LED-strips and up to 12W
 - 12/24V or 5V-only power supply support
- Different assembly versions available, see our website at www.display-solution.com

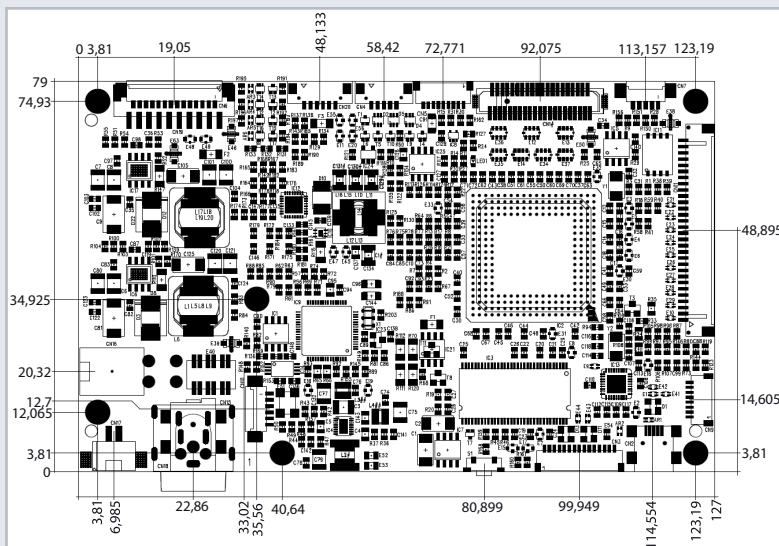


DisplayLink™ Technology - DL120/DL160

- ✓ Connect a PC with USB 2.0 port directly to any LCD TFT panel
- ✓ Lossless compression protocol
- ✓ Highly interactive and very low latency user experience
- ✓ Supports Windows 2000, XP and Vista
- ✓ Supports Apple OS X-Tiger 10.4.11, Leopard 10.5.6
- ✓ Optional Linux support
- ✓ Mirror mode or extended desktop
- ✓ Supports resolutions up to 1600x1200/1680x1050
- ✓ Supports screen rotations of 90°, 180°, 270°, 360°
- ✓ Fully Microsoft WHQL signed
- ✓ Up to 6 Displays are supported

WISAIR WUSB Support

- ✓ UltraSpeed technology for optimized performance
- ✓ Windows Vista/XP support
- ✓ User-friendly Wireless USB association
- ✓ Software drivers: Windows® Vista/XP
- ✓ Regulation compliant to US, Japan, Europe, Korea
- ✓ 128-bit AES security
- ✓ 3.168 to 4.752 GHz (WiMedia band group 1)
- ✓ Wireless USB 1.0, USB-IF certified
- ✓ Certified WiMedia PHY and MAC
- ✓ Wireless USB connectivity with simple setup and no network configuration



Specification

- Supported Panel Resolutions (LVDS / TTL)
 - DisplayLink DL120: 640x480 to 1280x1024 / 1440x900
 - DisplayLink DL160: 640x480 to 1600x1200 / 1680x1050
- Touch Controller - optional
 - Resistive Technology 4-Wire (DMC), optional 5-Wire
- LED-Driver
 - Supports LED-backlight configurations up to 12W
 - Supports up to 4/8 LED strings which can be enabled individually
 - LED voltage up to 44V and up to 120/60 mA per string
 - Supports temperature derating functionality
- Input Voltage
 - 12/24V or 5V Only (Backlight voltage = Input Voltage)
- Environmental
 - Operating Temperature: 0°C to 70°C
 - Relative Humidity: 5%-85%, non condensing