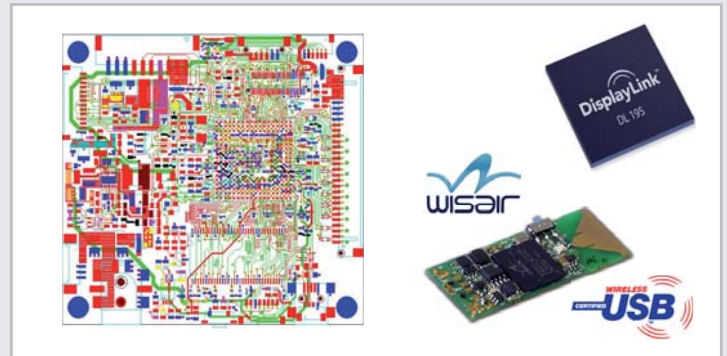


Low-cost LCD TFT USB Controller Board with optional Wireless-USB Interface

d.screen USB mini is a cost-effective innovative board solution for high performance USB 2.0 connected displays based on DisplayLink's latest DL1x5 device family. It is designed to act as a direct interface between USB 2.0 and small/midsized LCD TFT displays from VGA up to Full-HD/WUXGA/QWXGA. A highly efficient power-management and the supported WUSB technology from Wisair makes the d.screen USB mini the perfect solution for portable multifunctional monitors.

d.screen USB mini is a member of the **device** product family. As any device of this series this board was designed to meet the extended requirements of embedded applications.



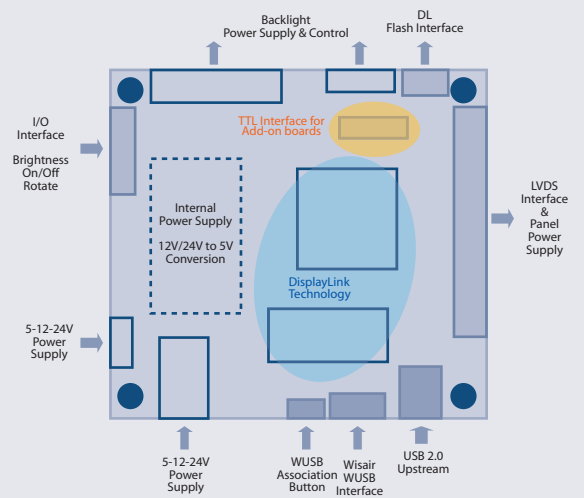
Features

- USB-Interface Only
- DisplayLink UGA Technology - DL1x5
- Optional WUSB-Interface for Wisair's WUSB technology
- Display brightness control
- Display on/off control
- Picture rotation support via external sensor (optional)
- 12/24V or 5V-only power supply support
- Enables Bus-powered USB connected LCD TFT displays

DisplayLink™ Technology with DL1x5

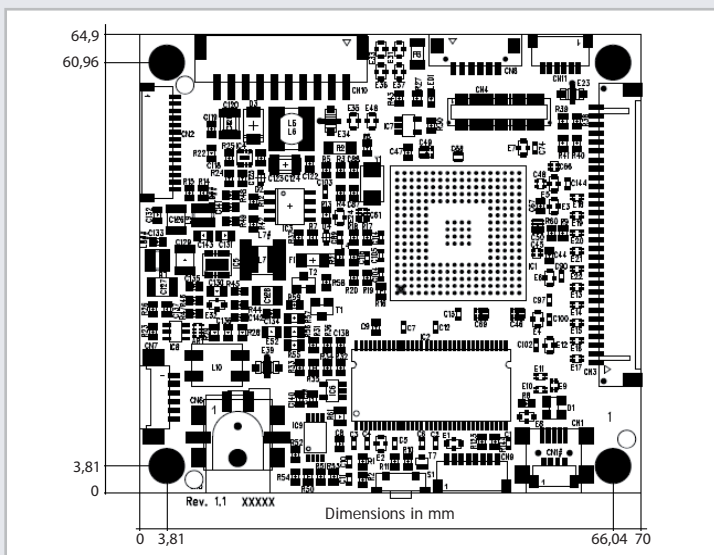
- ✓ Connect a PC with USB 2.0 port to any LCD TFT panel
- ✓ Lossless compression protocol
- ✓ Supports Windows 2000, XP, Vista and Windows 7
- ✓ Supports Apple OS X-Tiger 10.4.11, Leopard 10.5.6
- ✓ Supports screen rotations and mirror mode or extended desktop
- ✓ Supports resolution up to Full-HD / WUXGA / QWXGA
- ✓ Optional Linux support
- ✓ Up to 6 Displays are supported

	DL-195	DL-165	DL-125
Maximum Resolution	1920 x 1200 2048 x 1152	1600 x 1200 1920 x 1080	1280 x 1024 1440 x 900
Integrated USB 2.0	✓	✓	✓
Dual Core Decode Engines	✓	✓	
DisplayLink DL 2+ Compression	✓	✓	✓



Wisair WUSB Support

- ✓ UltraSpeed technology for optimized performance
- ✓ User-friendly Wireless USB association
- ✓ Regulation compliant to US, Japan, Europe, Korea
- ✓ Certified WiMedia PHY and MAC



Specification

- Supported Input Resolutions (LVDS / TTL)**
- DisplayLink DL125: 640x480 to 1280x1024 / 1440x900
 - DisplayLink DL165: 640x480 to 1600x1200 / 1920x1080
 - DisplayLink DL195: 640x480 to 1920x1200 / 2048x1152
 - Logic Supply voltage: 3.3V / 1.0A or 5.0V / 1.3A (optional 1.8A)

- Backlight Control / Support**
- Supports CCFL and LED Drivers
 - Supports analog and PWM brightness control
 - Supports 5V/12V LED driver

- WUSB-Interface**
- Supports Wisair's embedded WUSB device module

- Input Voltage**
- 12/24V or 5V Only (Backlight voltage = Input Voltage)

- Environmental**
- Operating Temperature: 0°C to 70°C
 - Relative Humidity: 5%-85%, non condensing