

RGB Scaler Board

## RGB-DVI-(Quasi) HDMI Scaler Board supporting resolutions up to Full-HD / WUXGA

The d.scale-HD is a cost-effective innovative scaler board solution for high performance RGB / DVI / Q-HDMI and optional DisplayPort (DP) connected displays based on ST-Micro's STDP53xx (optional STDP60xx) scaler family. It is designed to act as a direct interface between either RGB, DVI, Q-HDMI or DisplayPort and LCD TFT displays from VGA up to Full-HD/WUXGA. A highly efficient power-management and an optional ultra slim architecture makes the d.scale-HD the perfect solution for ultra low power multifunctional monitors.

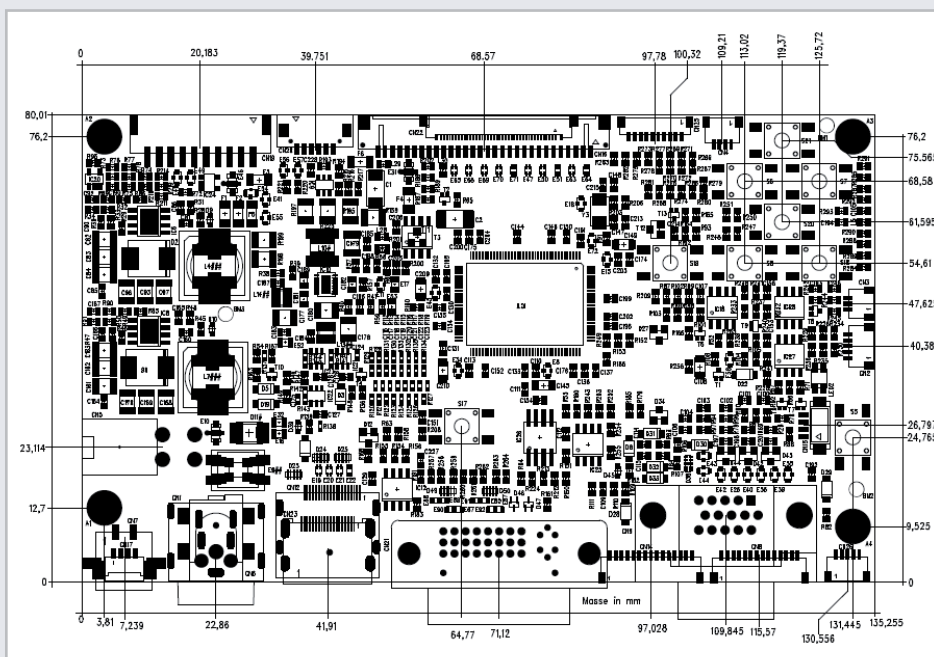
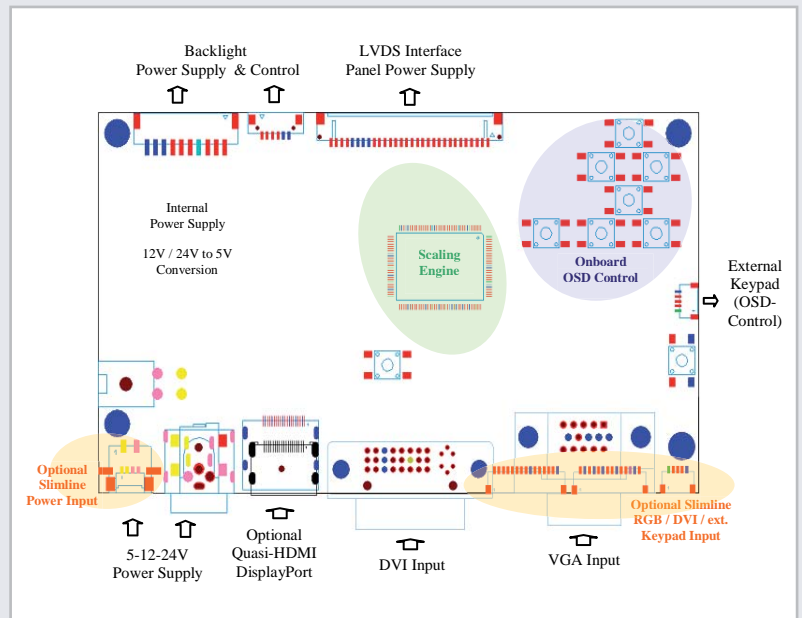


### Features

- ✓ DVI® input
- ✓ RGB-analog input
- ✓ Q-HDMI port to interconnect with 1.2V HDMI/DVI transmitters (optional)
- ✓ Optional DisplayPort input (DP)
- ✓ Instant Auto™ provides automatic image alignment for analog input from PC
- ✓ 12/24V power supply supports also large displays from a single 24V power supply

#### ST Technology (STPD50xx/STDP60xx)

- ✓ Supports LCD-TFT Displays
  - VGA to UXGA / WSXGA
  - VGA to Full HD / WUXGA (1920 x 1200)
- ✓ Faroudja RealColor® color processing:
- ✓ Ultra-Reliable DVI® receiver (165 MHz)
- ✓ Triple-channel (10-bit) ADC (205 MHz) and PLL



### Specification

#### Supported Panel Resolutions (LVDS only)

- 640x480 to 1920x1080 / 1920x1200 (VGA to Full HD / WUXGA)

#### Input Voltage

- 12V-28V (Backlight Voltage = Input Voltage)
- 24V only (Panel & Backlight Supply Voltage adjustable)

#### Environmental

- Operating Temperature: 0°C to 70°C
- Relative Humidity: 5%-85%, non condensing