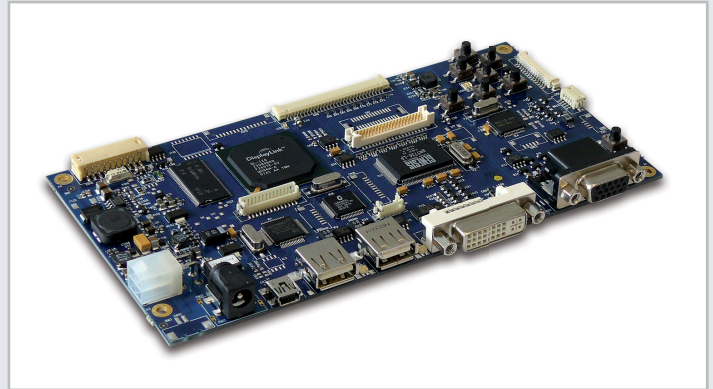


USB Controller Board

Design your customer's experience

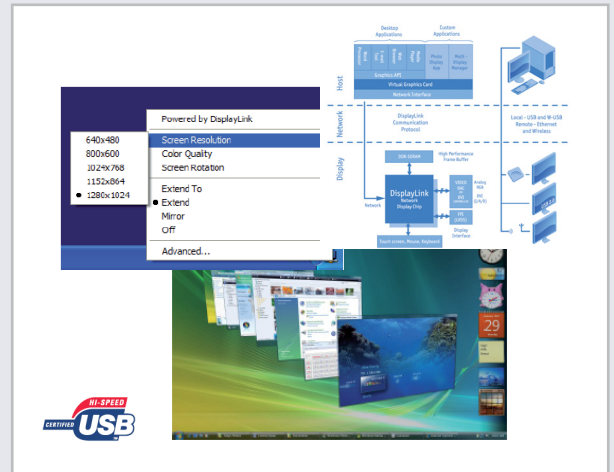
**d.client USB** is an innovative controller board solution for high performance USB 2.0 connected displays. It is designed to act as a full featured monitor interface including an additional RGB and DVI input, USB Hub functionality and touch screen support.

**d.client USB** is a member of the **device** family. As any member of this family, which is developed by Display Solution AG, this board was designed to meet the extended requirements of embedded applications. A well-balanced hard- and software combination affords a feature rich product at a competitive price.



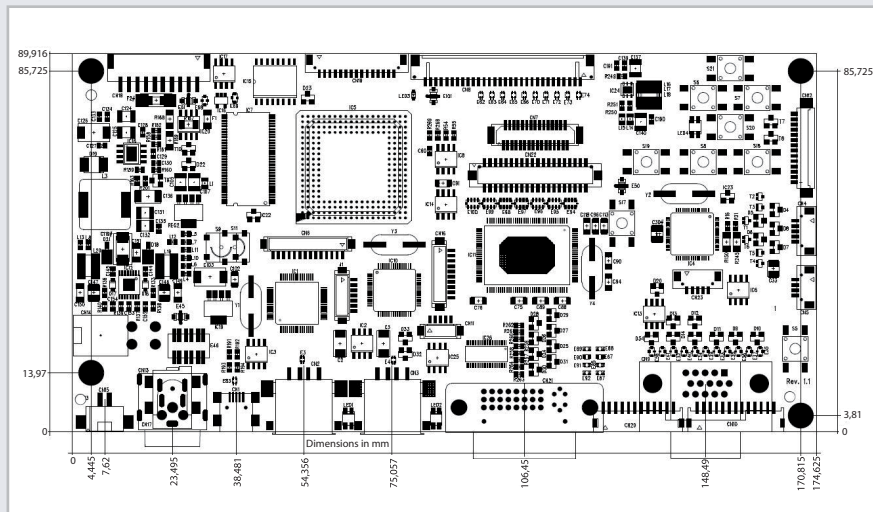
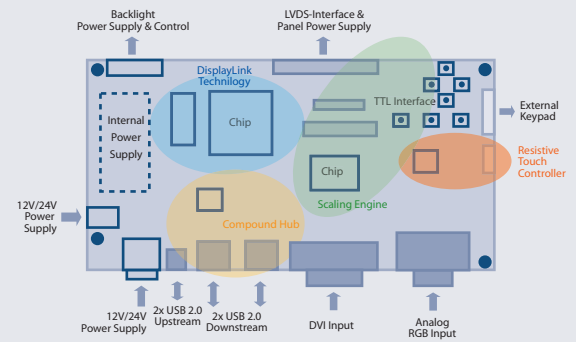
**DisplayLink™ Technology** with DL120/160 ICs

- ✓ Connect a PC with USB 2.0 port directly to any LCD TFT panel
- ✓ Lossless compression protocol
- ✓ Supports almost any resolution up to 1600x1200 / 1680x1050
- ✓ Highly interactive and very low latency user experience
- ✓ Full automated and transparent software layer
- ✓ Supports Windows 2000, XP and Vista - Basic & Aero, Linux planned
- ✓ Mirror mode or extended desktop
- ✓ Supports screen rotations of 90°, 180°, 270°, 360°
- ✓ Full 24bit (Windows: 32bit True Colour) colour support
- ✓ Video playback with 60 fps @ high resolution
- ✓ Fully Microsoft WHQL signed
- ✓ Management is performed through the Windows Control Panel interface - eliminating need for proprietary and language specific user & configuration tools
- ✓ Up to 6 Displays are supported in either hub or "daisy-chain" connected



Features

- Compound Hub (USB 2.0 high speed) with 2 additional downstream ports
- DisplayLink Technology (DL120/DL160) with integrated TTL/LVDS interface connects a PC with USB 2.0 port directly to an LCD TFT panel
- An on-board scaling engine (Genesis gm5766/gm5726) with additional RGB and DVI input provides an enhanced monitor interface
- Optional 4-/5-wire touch screen support



Specification

Supported Panel Resolutions (LVDS/TTL)

- DisplayLink DL120 & Genesis gm5726  
640x480 to 1280x1024 / 1440x900
- DisplayLink DL160 & Genesis gm5766  
640x480 to 1600x1200 / 1680x1050

Touch Controller - optional

- Resistive Technology 4-wire (DMC)
- Resistive Technology 5-wire (DMC) - optional

Input Voltage

- 8V-26V (Backlight Voltage = Input Voltage)

Environmental

- Operating Temperature: 0°C to 70°C
- Relative Humidity: 5%-85%, non condensing