

## Unique USB Connected & USB Powered Solution for Small Displays

**AB105** is an innovative board solution for high performance USB 2.0 connected displays. It is designed to act as a full featured MiniMon interface for small sized LCD-TFT displays including on-board LED-driver and touch screen support, and a 2-port USB Hub.

**AB105** is a member of the **device** family. As any member of this family, which is developed by Display Solution AG, this board was designed to meet the extended requirements of embedded applications. A well-balanced hard- and software combination affords a feature rich product at a competitive price.



## Features

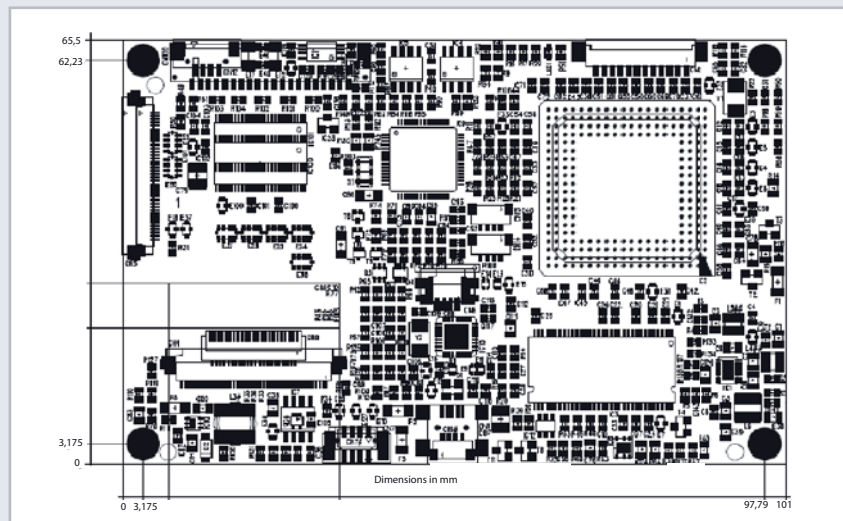
**AB105** is optimized for the 4.3" / 5" WVGA Optrex displays and the 5.7" SFD-057B VGA display providing the following features:

- USB-Interface only
- USB-Hub (2 Highspeed USB 2.0 Ports for additional USB-devices)
- USB Touch Controller
- Display on/off via push-button

- DisplayLink UGA Technology - DL120
- LED driver
- Picture rotation support via external sensor (optional)
- Brightness control via 2 external push-buttons
- Depending on the connected display the power consumption incl. board, display, LED-backlight and Touch is less than 500mA. In this case the solution can work as a USB-powered device and needs no external power supply.

## DisplayLink™ Technology with DL120

- ✓ Connect a PC with USB 2.0 port directly to any LCD TFT panel
- ✓ Lossless compression protocol
- ✓ Highly interactive and very low latency user experience
- ✓ Supports Windows 2000, XP and Vista - Basic & Aero, Linux planned
- ✓ Mirror mode or extended desktop
- ✓ Supports screen rotations of 90°, 180°, 270°, 360°
- ✓ Video playback with 60 fps
- ✓ Fully Microsoft WHQL signed
- ✓ Management is performed through the Windows Control Panel interface - eliminating need for proprietary and language specific user & configuration tools
- ✓ Up to 6 Displays are supported



## Specification

### Supported Panels

- Optrex 4.3":  
T-55226D043J-LW-A-AAN (800x480)
- Optrex 5.0":  
T-55382GD050JU-LW-A-ABN (800x480)  
T-55382GD050J-LW-A-ABN (800x480)
- Display Solution:  
SFD-057B (640x480)
- Panels with LVDS interface on request

### Power Supply

- Bus powered
- Optional external Power-Supply (+5V) with Hot-Swap functionality

### Touch Controller

- Resistive Technology 4-Wire for Optrex 5.0"

### Environmental

- Operating Temperature: 0°C to 70°C
- Relative Humidity: 5%-85%, non condensing